



PDCM

Power Drive Medium Counterbalanced Trucks

This series represents the walkie lift truck version of the sit-down rider lift truck. Ideal choice when handling or staging a variety of load sizes.

CAPACITY

2000 lbs. to 2500 lbs. 24" load centers

BATTERY

Two 12V poly-cased batteries connected in series, providing a 24V power source at 200AH

CHARGER

Internal automatic smart charger. Input: 120VAC-1Ø-60hz at 15A. Output: 25VAC at 25A. Supports gel, absorbed glass and flooded lead acid batteries.

PERFORMANCE

Resistor three speeds forward and reverse

TRAVEL

From 0 mph to 3.0 mph empty

From 0 mph to 2.8 mph loaded

LIFT

Up to 42 fpm empty.

Up to 22 fpm loaded—2500 lbs

LOWERING

Up to 28 fpm empty.

Up to 56 fpm loaded—2500 lbs

FIXED MAST

FORGED FORKS

36", 42", 48", x 4" x 1.25"

CHASSIS WEIGHT

4493 lbs with batteries (max.)

TIRES

DRIVE WHEEL

10.5" x 5" crowned polyurethane

LOAD WHEELS

10.5" x 4" polyurethane

CONTROL HANDLE "All Steel"

Designed to allow smooth operation with either hand. Protective wraparound hand guard, rubber hand grips, horn, "Belly Button" reversing switch, thumb and twist grip travel control are all standard.

HYDRAULICS

The dashboard mounted lift and lower lever allow uncomplicated and precise load placement. Infinitely variable ball-type lowering valve provides a full range of lowering speeds for optimum control.

Premium design lift cylinder provides smooth lifting and lowering and long life with minimal maintenance.



Full system filtration prevents contaminants from entering the hydraulic system. Pressure compensating flow control valve at base of lift cylinder regulates lowering speeds.

ELECTRICAL

All cables and wires are color coded and or numbered for easy service and tracing. Control circuits are fuse-protected, and use plug-in type connector.

Hydraulic lift pump motor is specially designed for peak electrical efficiency at specific torque and rpm levels.

DRIVE SYSTEM and BRAKES

Compact, open frame 24V DC drive motor provides ample torque and RPM at low current and temperature levels.

Direct drive full oil bath transmission, operates through a 25:1 transmission ratio to multiply the braking force for safe stopping performance.

The drive motor, transmission, brake and drive wheel are coupled to the control arm via pivot tube that provides the operator direct control of all drive functions.

The entire drive system is mounted within the truck frame for maximum protection.

ACCESSIBILITY

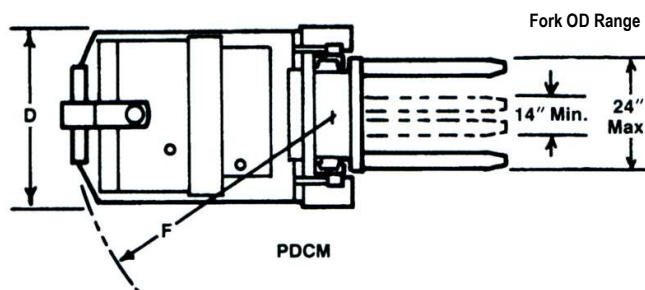
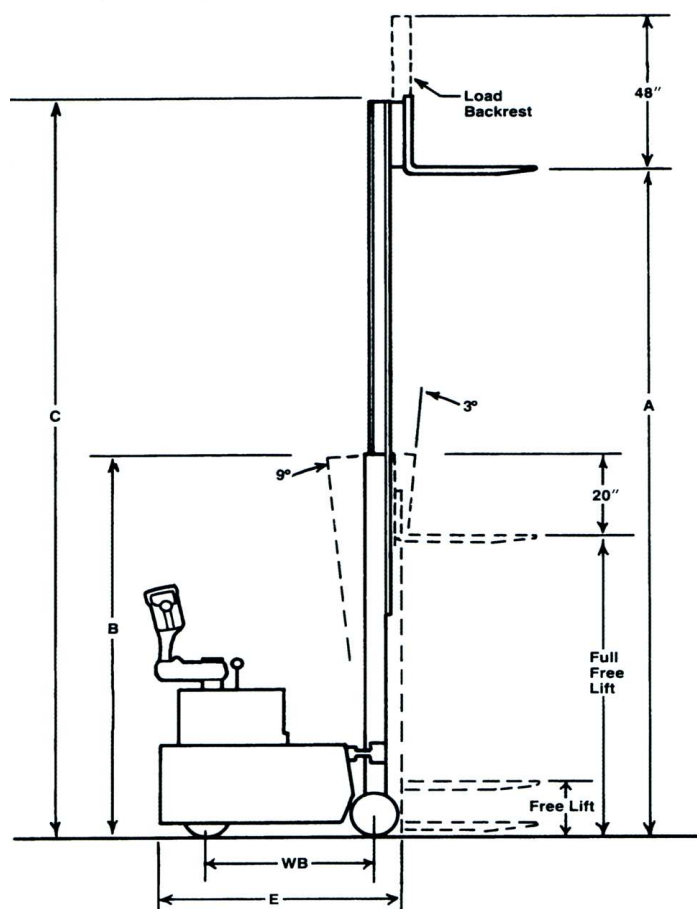
Removal of one piece power head cover exposes major components for inspection and maintenance.

OPTIONAL EQUIPMENT

- Curtis® transistor travel control
- Hour meter
- Battery discharge indicator (BDI)
- Key switch
- Lift lock out
- Remote lift/lower buttons in handle
- ITA Class II fork carriage
- 48" tall load back rest (LBR)
- Cold conditioning
- Maintenance free batteries
- Remote lift/lower box

OPTIONAL ATTACHMENTS

- Boom with hook
- Die handler—manual
- Drum handler
- Paper roll handler
- Ram

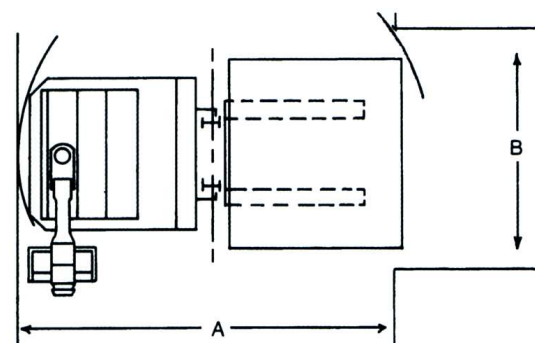


Right Angle Stacking Requirements

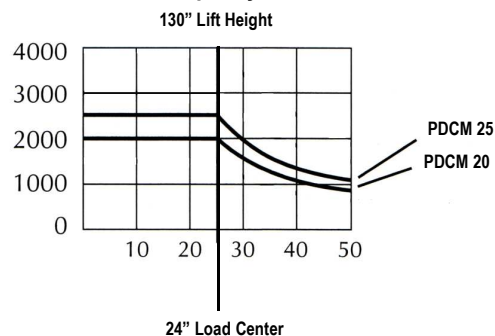
A = Aisle B = Bay

Model Number	Truck Length	Load Size					
		36" x 36"		42" x 42"		48" x 48"	
		B	A	B	A	B	A
PDCM -20	52"	42"	89"	48"	95"	54"	101"
PDCM -25	58"	42"	95"	48"	101"	54"	107"

- Aisle dimensions listed have zero clearance
- Add 12" for ease of use



Load Capacity Chart



Model #	Capacity at 24" Load Center	Lift Height	Col Height	2 Ext Height	Free Lift Height	Overall Width	Power Head Length	Turn Radius	CL LOAD WHEEL TO CL DRIVE WHEEL WB	Battery 24V	Charger 24V	Ship Weight
		A	B	C		D	E	F				
PDCM-20 Series												
PDCM-20-60	2000	60	77	80	57	36	55.1	74.7	37.1	Two 12V 200AH	15 Amp	4118
PDCM-20-106	2000	106	71	12	12	36	55.1	74.7	37.1			4448
PDCM-20-130	2000	130	83	147	12	36	55.1	74.7	37.1			4523
PDCM-25 Series												
PDCM-25-60	2500	60	77	80	57	36	55.1	74.7	37.1	Two 12V 200AH	15 Amp	4013
PDCM-25-106	2500	106	71	12	12	36	55.1	74.7	37.1			4343
PDCM-25-130	2500	130	83	147	12	36	55.1	74.7	37.1			4418
PDCM-25-154	12500	154	95	171	12	36	55.1	74.7	37.1			4493

¹ Derates 500 lbs over 130"

² Add 31" for load backrest